

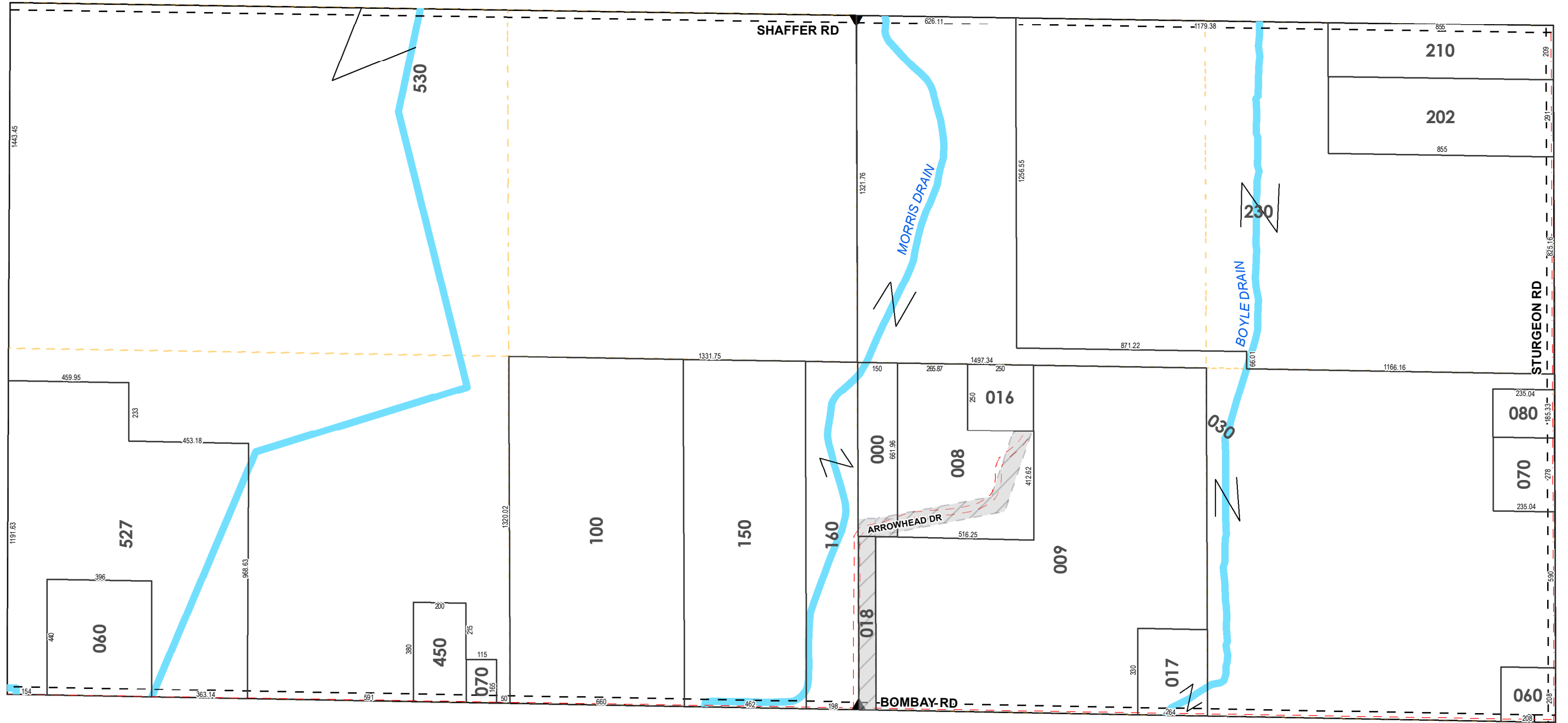
W 1/4 COR

1/4 SEC 300

CENTER SEC COR

1/4 SEC 400

E 1/4 COR



SW SEC COR

S 1/4 COR

SE SEC COR

T16NR02E

1 inch = 400 feet
MILLS TOWNSHIP
 Midland County

S1/2SEC31

Revised: **3/1/2019**