

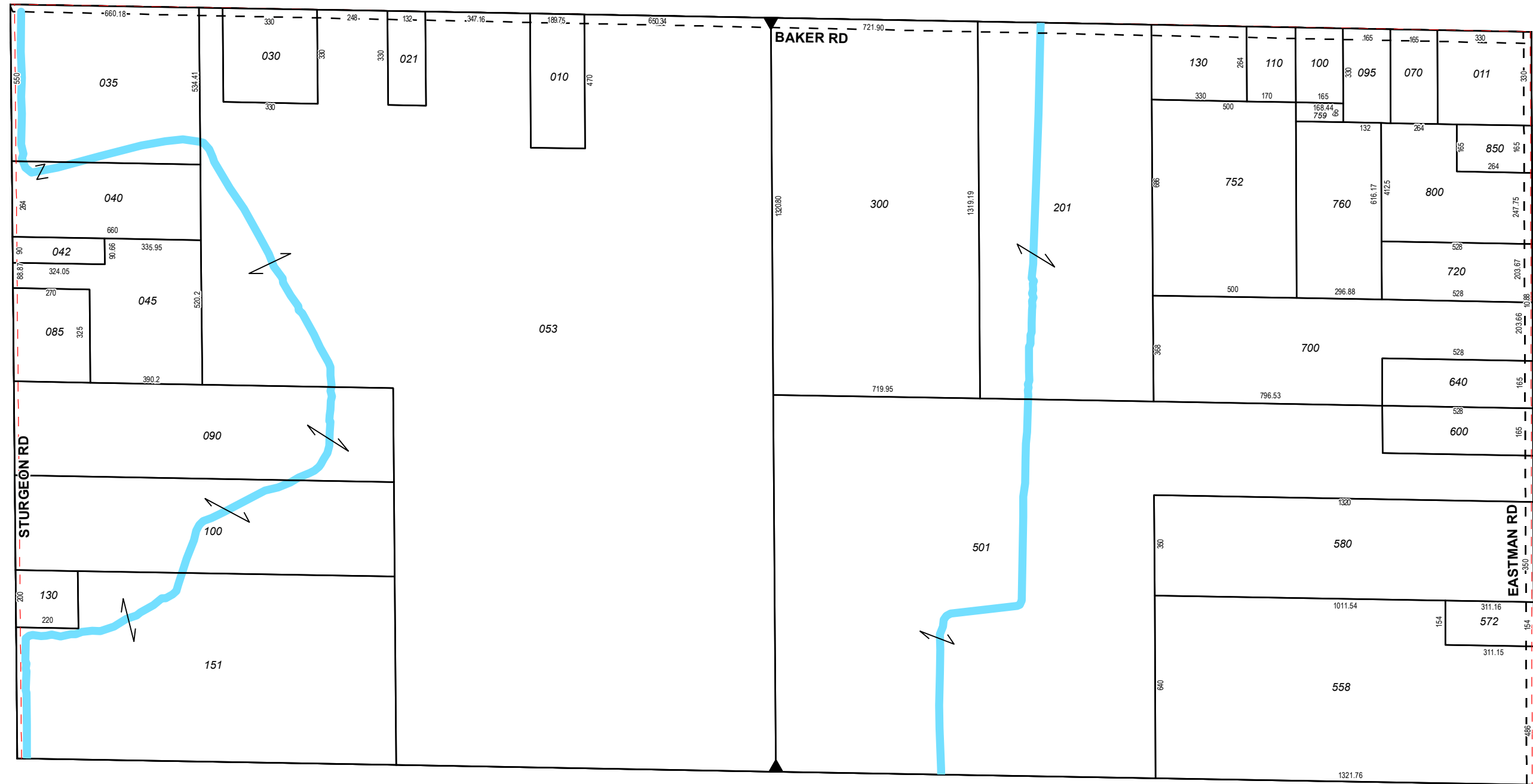
NW SEC COR

1/4 SEC 200

N 1/4 COR

1/4 SEC 100

NE SEC COR



W 1/4 COR

CENTER SEC COR

E 1/4 COR

1 inch = 400 feet

MILLS TOWNSHIP
Midland County

T16NR02E

N1/2SEC29

Revised: 3/1/2018