

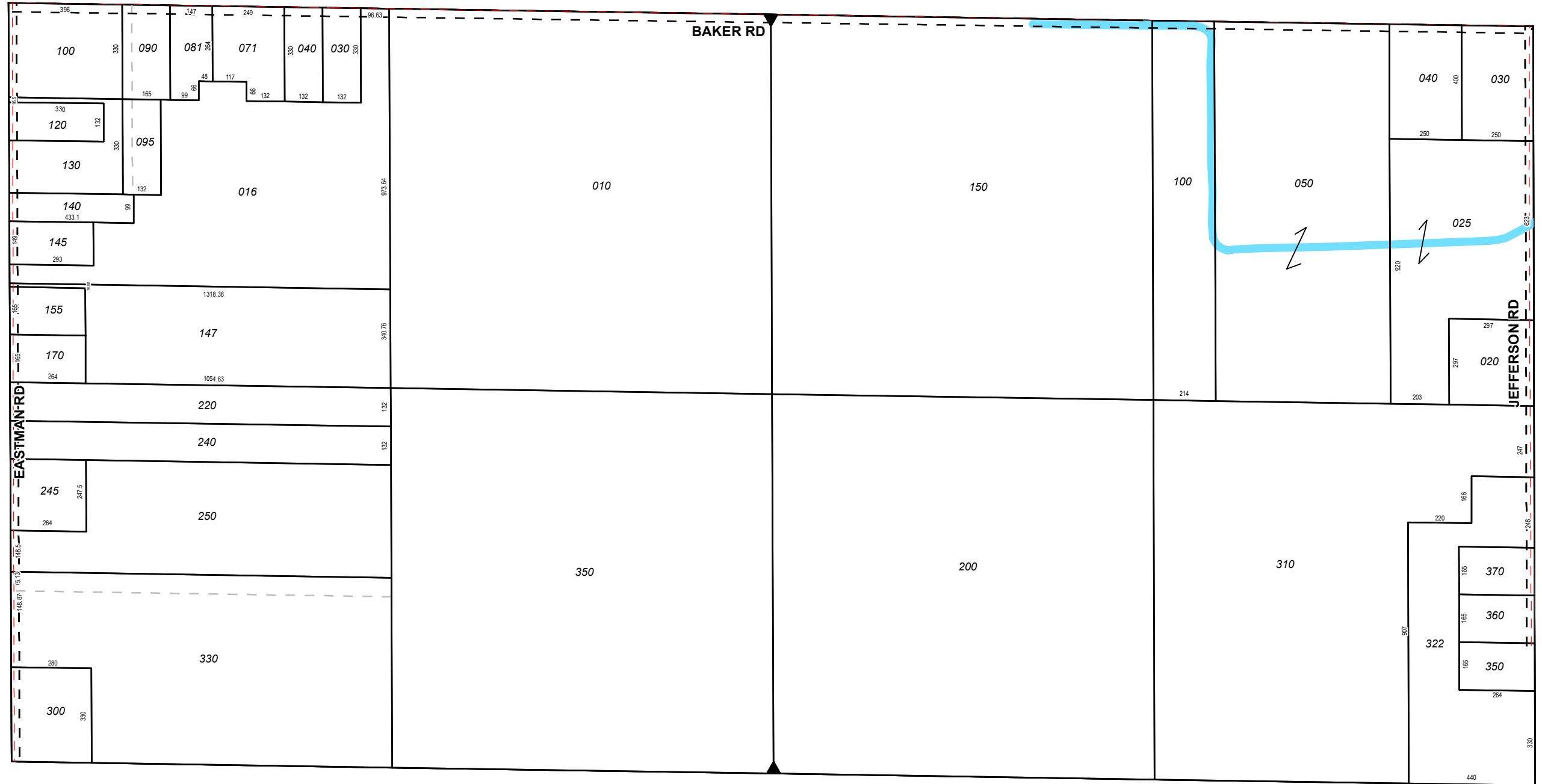
NW SEC COR

1/4 SEC 200

N 1/4 COR

1/4 SEC 100

NE SEC COR



W 1/4 COR

CENTER SEC COR

E 1/4 COR

1 inch = 400 feet  
**MILLS TOWNSHIP**  
 Midland County

**N1/2SEC28**

Revised: **3/1/2017**

T16NR02E