

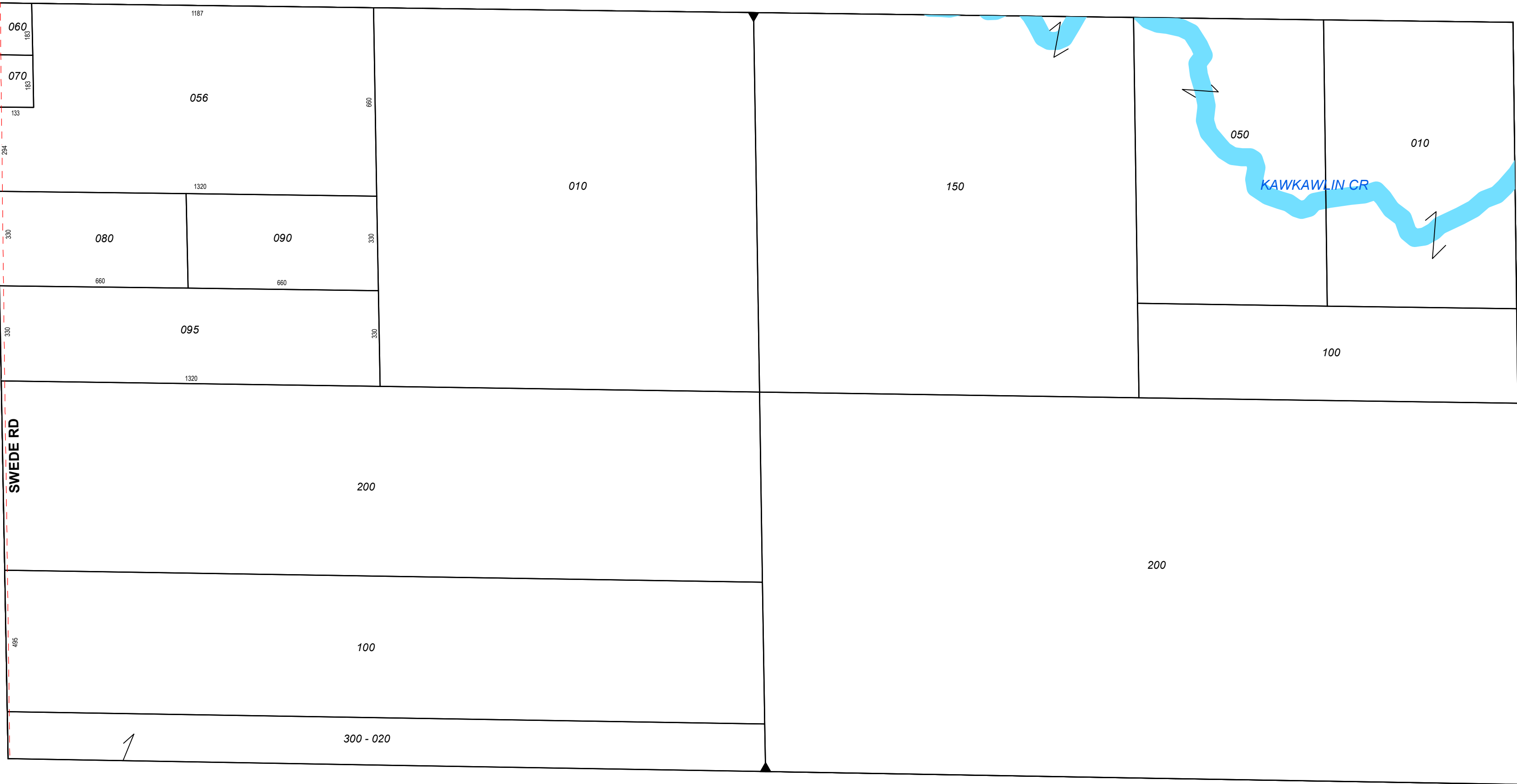
NW SEC COR

1/4 SEC 200

N 1/4 COR

1/4 SEC 100

NE SEC COR



SWEDE RD

KAWKAWLIN CR

W 1/4 COR

CENTER SEC COR

E 1/4 COR

1 inch = 300 feet

T16NR02E

MILLS TOWNSHIP
Midland County

N1/2SEC14

Revised: _____