

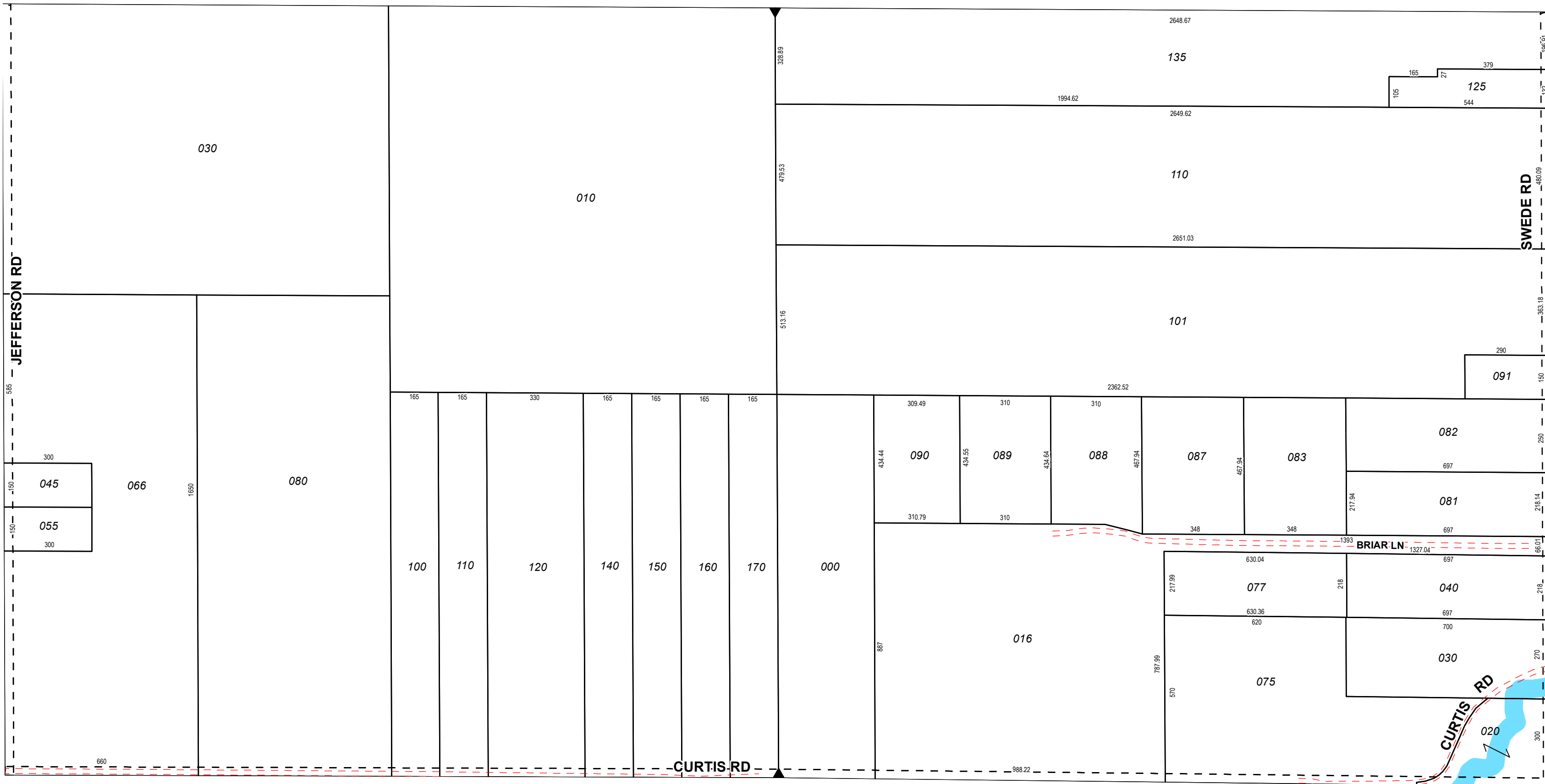
W 1/4 COR

1/4 SEC 300

CENTER SEC COR

1/4 SEC 400

E 1/4 COR



SW SEC COR

S 1/4 COR

SE SEC COR

1 inch = 300 feet

MILLS TOWNSHIP
Midland County

T16NR02E

S1/2SEC10

Revised: **3/1/2017**