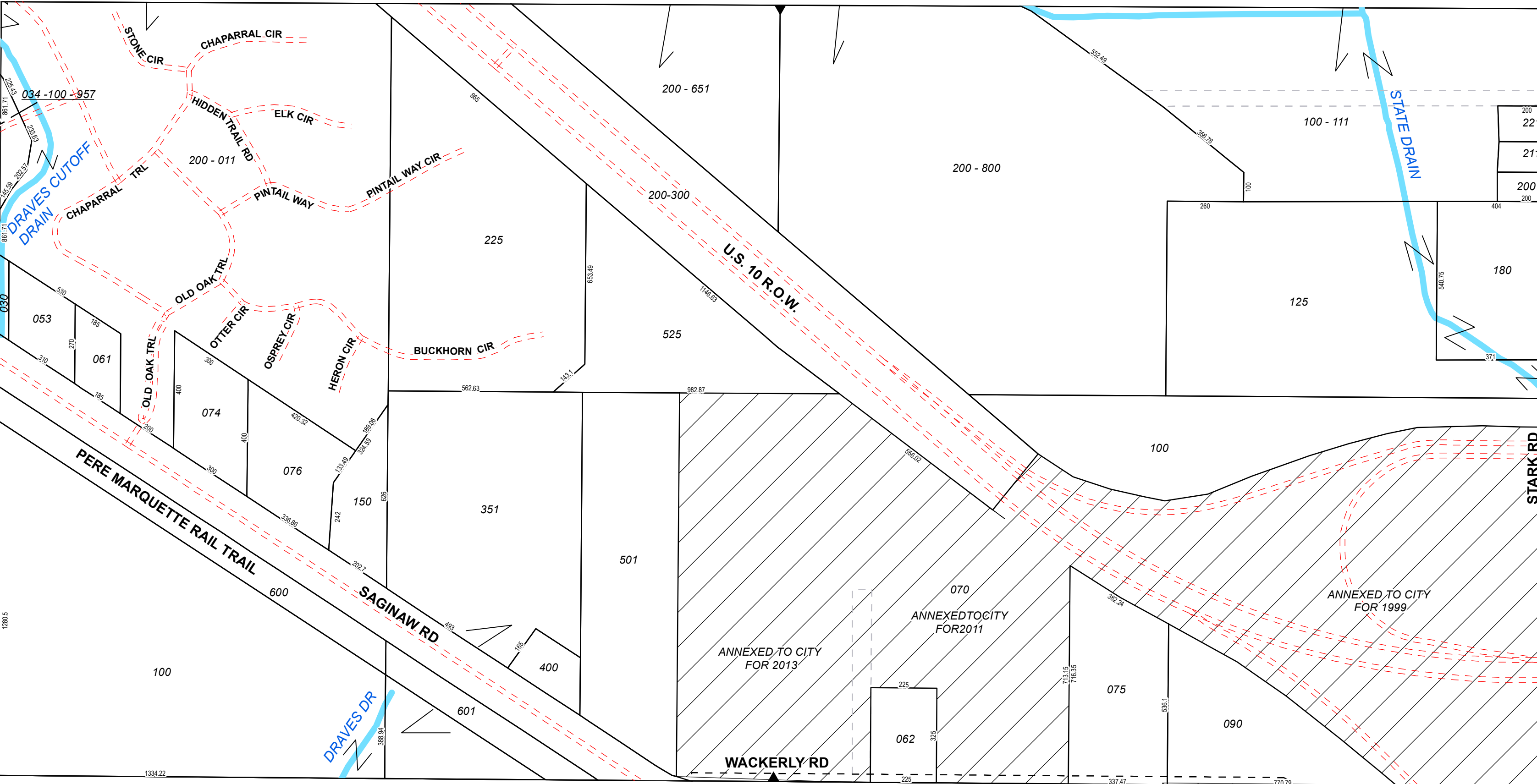


W 1/4 COR 1/4 SEC 300 CENTER SEC COR 1/4 SEC 400 E 1/4 COR



SW SEC COR S 1/4 COR Timber Lane Sub SE SEC COR

T15NR01E

1 inch = 300 feet
LINCOLN TOWNSHIP
 Midland County

S1/2SEC35

Revised: _____