

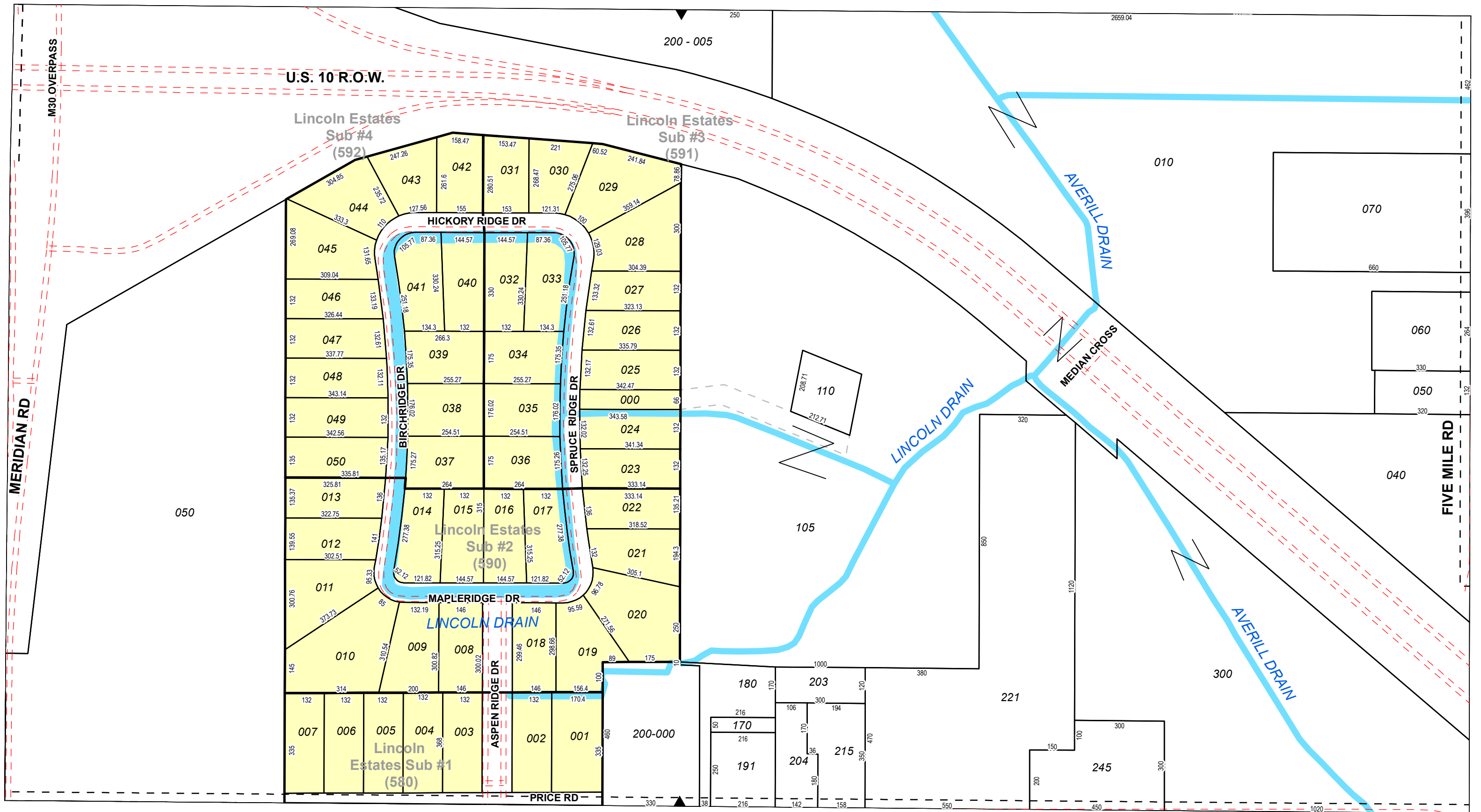
NW SEC COR

1/4 SEC 200

N 1/4 COR

1/4 SEC 100

NE SEC COR



W 1/4 COR

CENTER SEC COR

E 1/4 COR

1 inch = 300 feet

LINCOLN TOWNSHIP
Midland County

T15NR01E

N1/2SEC28

Revised: **3/1/2018**