

NW SEC COR

1/4 SEC 200

N 1/4 COR

1/4 SEC 100

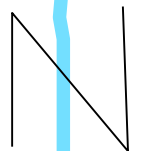
NE SEC COR

STARK RD

BENSCH DRAIN

010

010



W 1/4 COR

CENTER SEC COR

E 1/4 COR

1 inch = 300 feet

LINCOLN TOWNSHIP  
Midland County

T15NR01E

N1/2SEC25

Revised: \_\_\_\_\_