

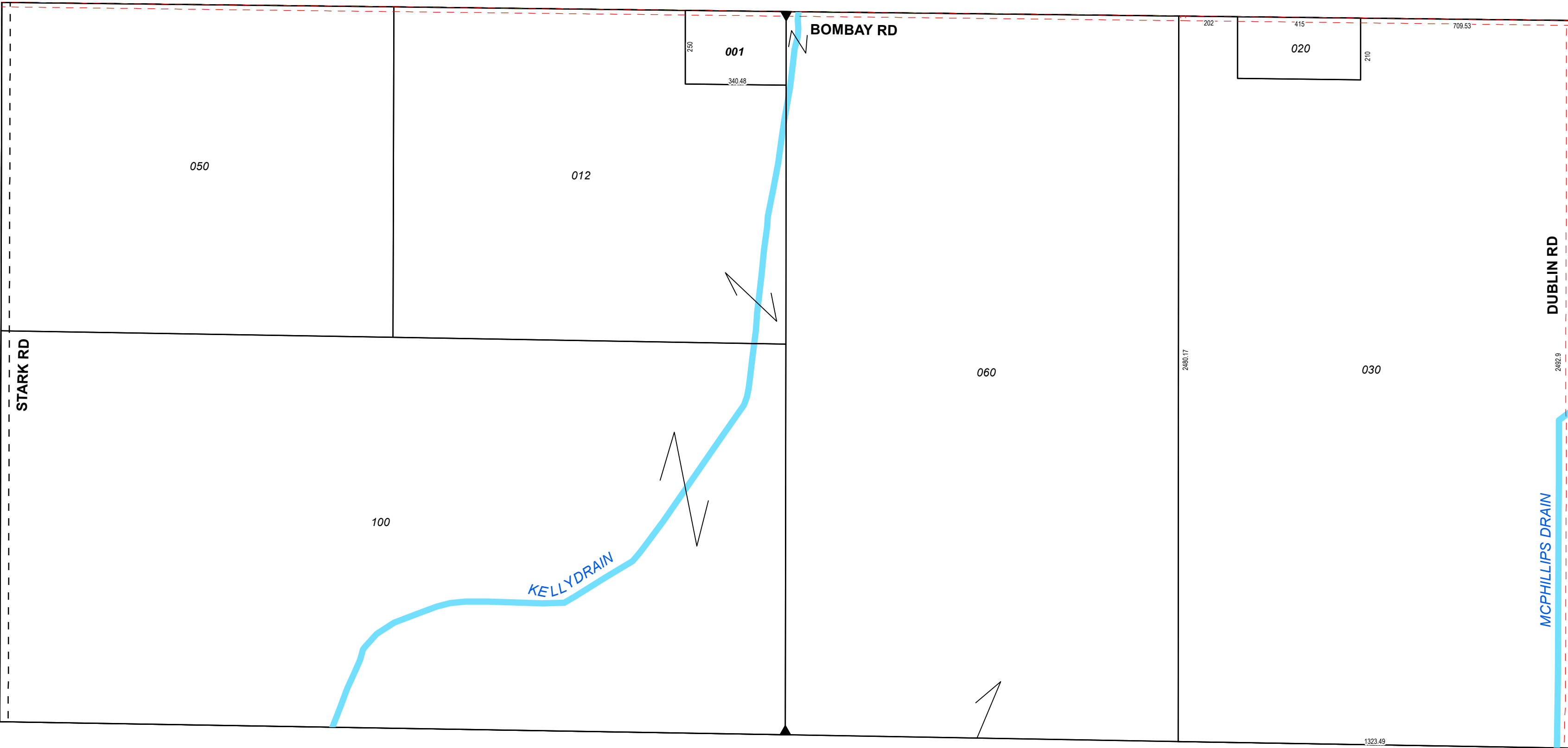
NW SEC COR

1/4 SEC 200

N 1/4 COR

1/4 SEC 100

NE SEC COR



W 1/4 COR

CENTER SEC COR

E 1/4 COR

T15NR01E

1 inch = 300 feet  
**LINCOLN TOWNSHIP**  
 Midland County

N1/2SEC1

Revised: \_\_\_\_\_