

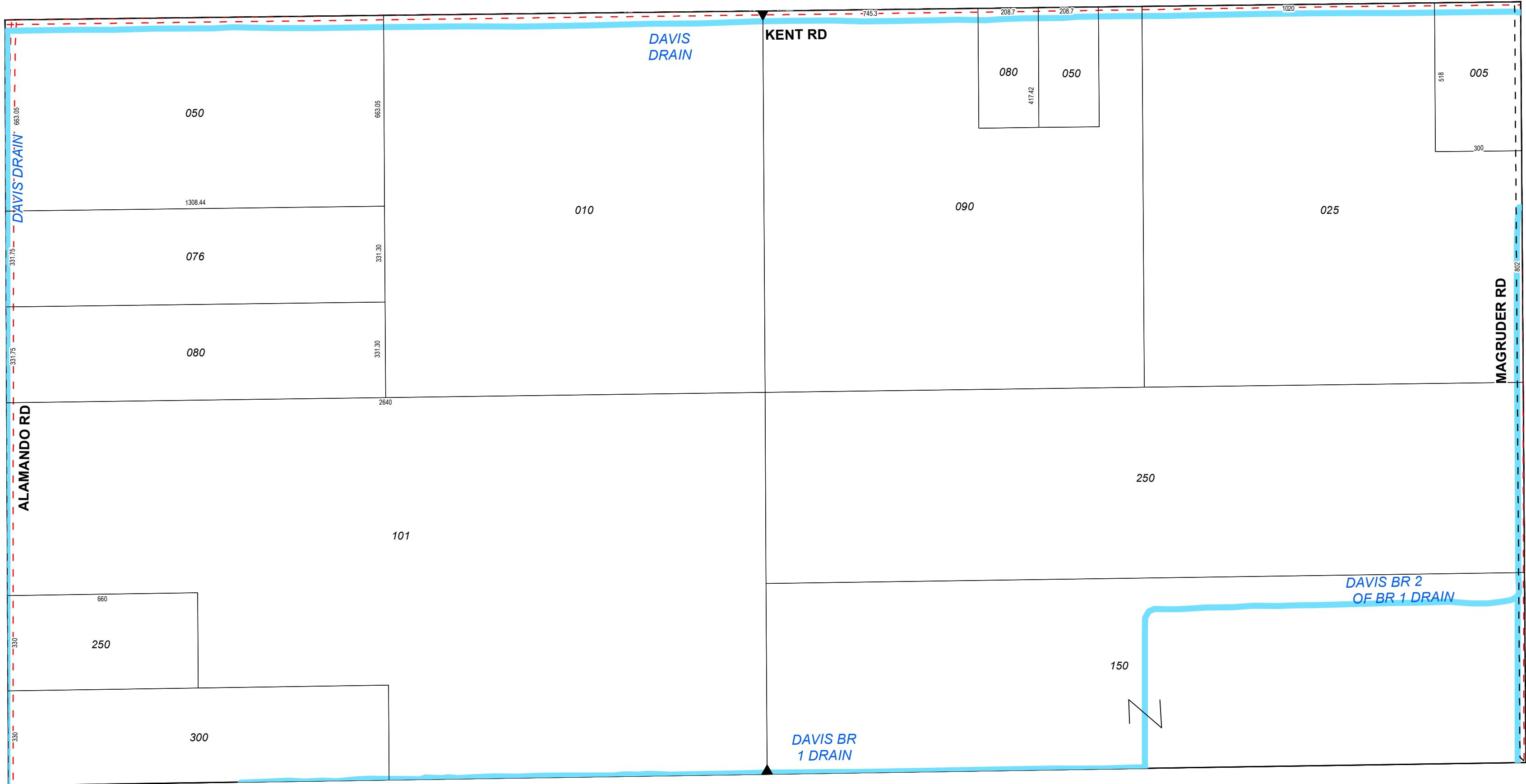
NW SEC COR

1/4 SEC 200

N 1/4 COR

1/4 SEC 100

NE SEC COR



W 1/4 COR

CENTER SEC COR  
1 inch = 300 feet

E 1/4 COR

T13NR02W

JASPER TOWNSHIP  
Midland County

N1/2SEC23

Revised: \_\_\_\_\_