

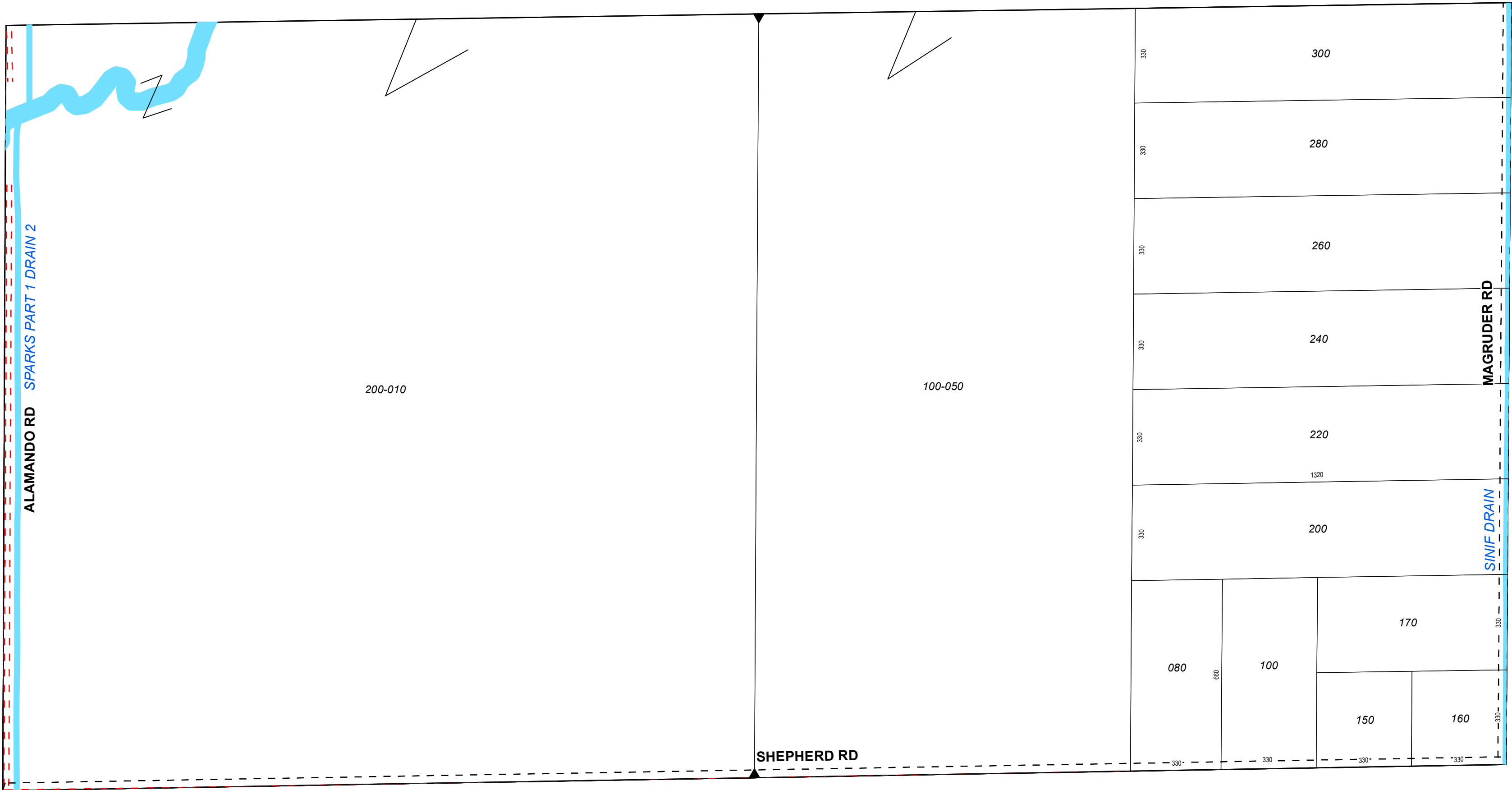
W 1/4 COR

1/4 SEC 300

CENTER SEC COR

1/4 SEC 400

E 1/4 COR



200-010

100-050

300

300

300

280

300

260

300

240

300

220

1320

300

200

080

660

100

170

150

160

330

330

330

330

MAGRUDER RD

SINIF DRAIN

SHEPHERD RD

ALAMANDO RD SPARKS PART 1 DRAIN 2

SW SEC COR

S 1/4 COR
1 inch = 300 feet

SE SEC COR

T13NR02W

JASPER TOWNSHIP
Midland County

S1/2SEC11

Revised: _____