

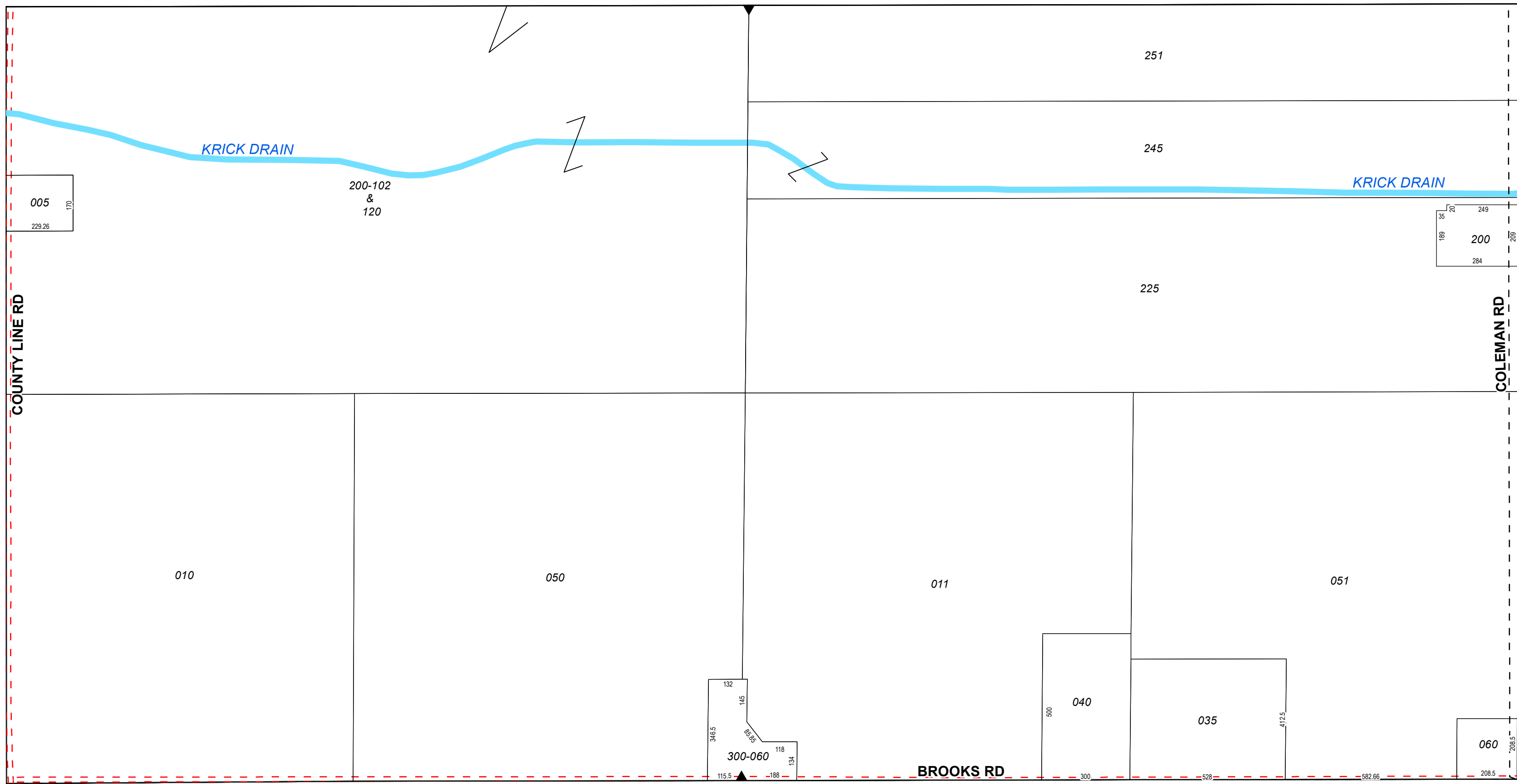
W 1/4 COR

1/4 SEC 300

CENTER SEC COR

1/4 SEC 400

E 1/4 COR



005  
170  
229.26

200-102  
&  
120

35 20 249  
189 200 209  
284

COUNTY LINE RD

COLEMAN RD

010

050

011

051

132  
145  
346.5  
85.35  
118  
134  
300-060  
115.5  
188

500  
300  
040

412.5  
528  
035

208.5  
208.5  
060

BROOKS RD

SW SEC COR

S 1/4 COR  
1 inch = 300 feet

SE SEC COR

T13NR02W

JASPER TOWNSHIP  
Midland County

S1/2SEC6

Revised: \_\_\_\_\_