

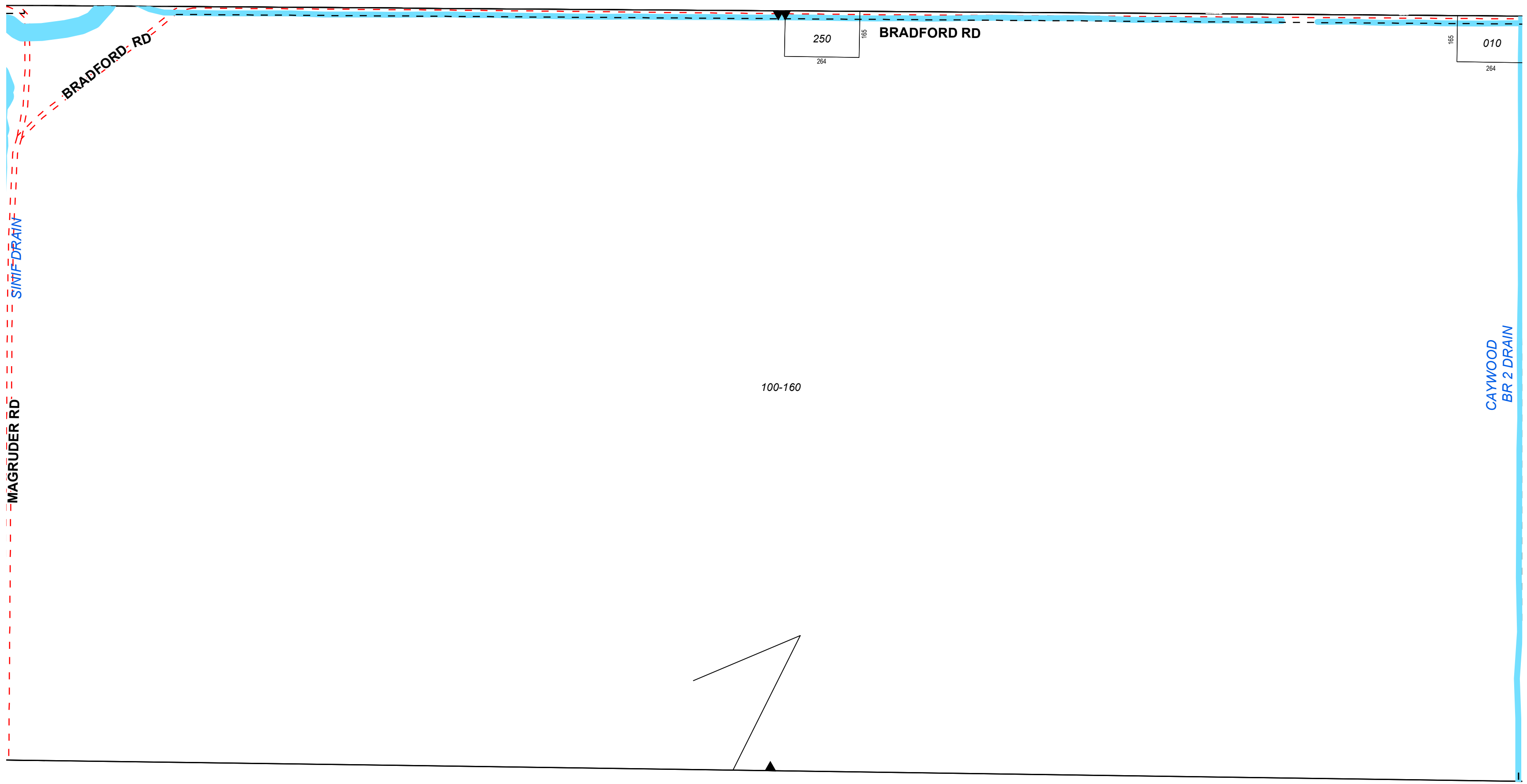
NW SEC COR

1/4 SEC 200

N 1/4 COR

1/4 SEC 100

NE SEC COR



BRADFORD RD

BRADFORD RD

MAGRUDER RD

CAYWOOD BR 2 DRAIN

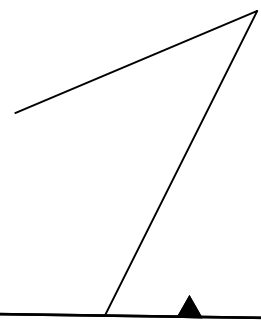
100-160

250

264

010

264



W 1/4 COR

CENTER SEC COR
1 inch = 300 feet

E 1/4 COR

T13NR02W

JASPER TOWNSHIP
Midland County

N1/2SEC1

Revised: _____