

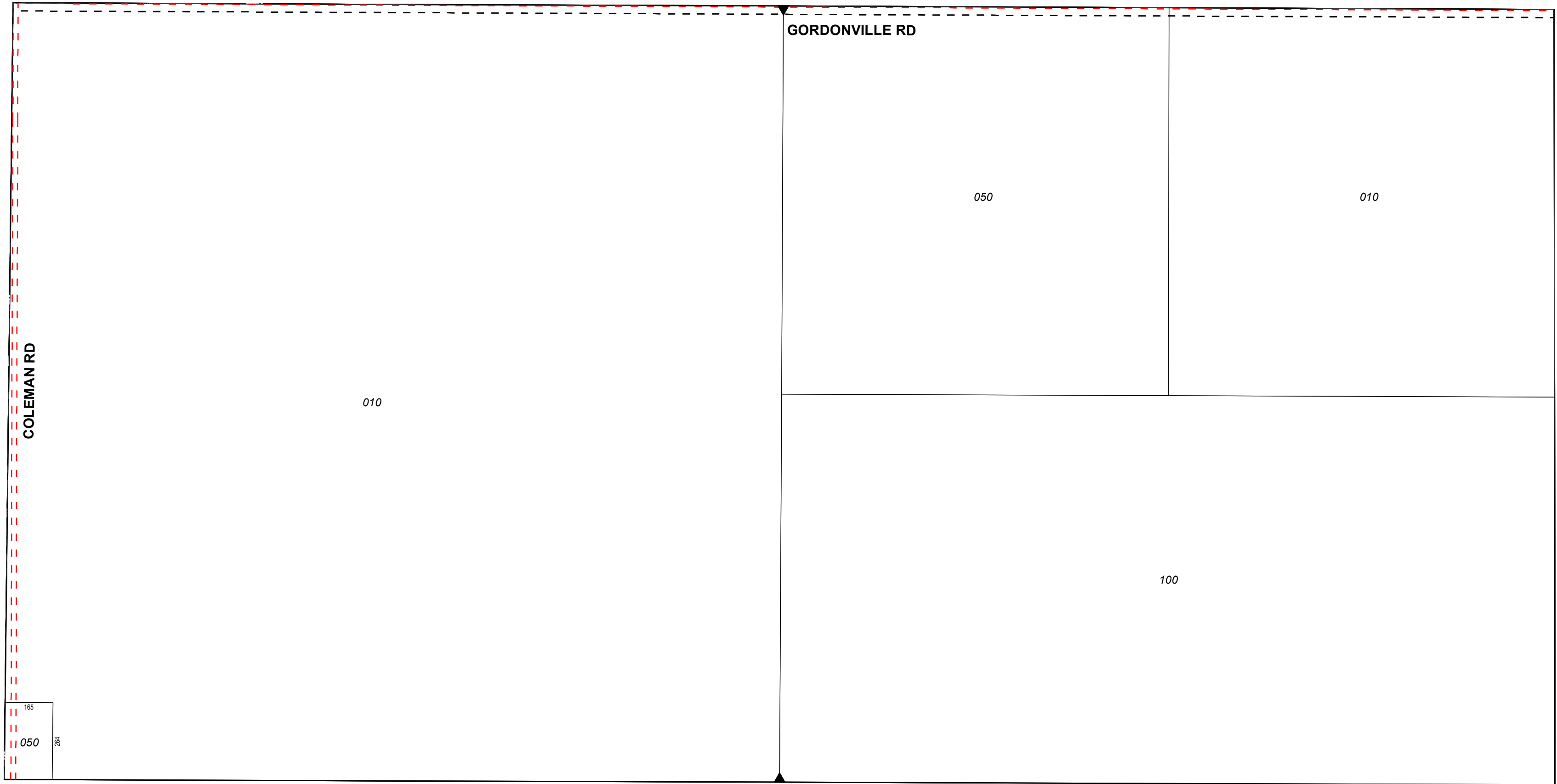
NW SEC COR

1/4 SEC 200

N 1/4 COR

1/4 SEC 100

NE SEC COR



GORDONVILLE RD

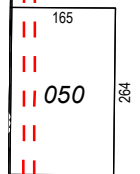
COLEMAN RD

010

050

010

100



W 1/4 COR

CENTER SEC COR
1 inch = 300 feet

E 1/4 COR

T14NR02W

GREENDALE TOWNSHIP
Midland County

N1/2SEC32

Revised: _____