

What would I do?

- Be willing to share your experience to a group of 10 to 15 teenagers in a secure setting
- Answer questions (optional)
- Express your true emotions
- Confront naive teenagers regarding the impact of crime
- Include how loved ones are and were impacted
- Bring a support person if desired
- Explain, in your words, how you are affected (short term/long term) emotionally, physically, financially, or spiritually
- Explain if you felt justice was served
- Privately debrief afterwards with a therapist
- Feel free to bring visuals to share
- Plan for a time commitment of 30 to 45 minutes



42ND CIRCUIT COURT FAMILY DIVISION

MIDLAND JUVENILE CARE CENTER

3712 E. Ashman St.

Midland, MI 48642

989-837-6080

IF YOU ARE
INTERESTED
OR WOULD LIKE MORE
INFORMATION

Michele Bell
Director of Court Services and
Program Development

Diana LaRue, MA, MSW
Day Treatment Supervisor

Jackie Warner, MA, LPC
Youth Intervention Specialist
CMH for Central Michigan

VICTIM IMPACT

Are you a victim of crime?

Do you want to be heard?

**Do others understand your
burdens & frustration?**

Want to make a difference?



**Victims & Survivors
Can Help Stop
Future Crime**

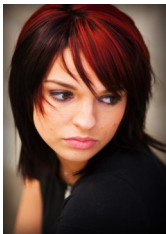
Victim Impact Program

Victim Impact Group is offered to adjudicated teens through the Midland County Juvenile Court. The program is a collaborative effort between the Court and Community Mental Health of Central Michigan.

The program is always seeking speakers who have been victims of a crime and are willing to share their experiences; such as whom was affected by the crime, the feelings of those affected at the time and how they feel currently.

The crime can be breaking and entering, domestic violence, car theft, shoplifting, property damage, assault, larceny, robbery, sexual assault or substance abuse by a child or spouse. Victims can be affected physically, financially, emotionally and spiritually.

The speakers are the most important and powerful part of the program. Teenagers learn best by hands-on experiences and listening to those affected and seeing them face to face.



Hear what speakers have said

"I don't know how it was for them, but it was healing for me."

"They were respectful and welcoming."

"It feels good to try and make a difference."



"If being here helps one of you to change your ways, then it was worth it."

"The point is to teach teens that their crimes do hurt others; the teachers are crime victims!"



"Youth will learn how their actions impact others."



Purpose

To help youth on probation understand how their crimes and behaviors significantly affects more than just them. Their actions affect other people, the community, economy, families, tax payers, insurance companies, and most importantly, a loss of security for those affected by the crime. Youth also learn to identify the ripple effect caused by their actions. The evidence-based curriculum is applied as a prevention program and aids in teaching young-adults empathy skills.

Another component teaches youth to identify the critical ways of thinking that caused them to act irresponsibly and make poor choices. By processing and practicing how critical thinking works, they can use that knowledge in the future to take control of their actions.

Victim Impact allows victims and survivors of crime tell their story and explain in their words how the crimes have affected them.

The program is powerful for teenagers. If you are willing to share an experience you or a family member had, we are willing to listen and learn.

